

Route 78

Updated: November 2011

Vineyard on Route 114 to Edgemont on Route 7, May 14, 1935. Deleted: Vineyard to Orem, 1953.

1953 Description:

From Orem on Route 1 easterly, to Edgemont on Route 7.

Approved by 1963 Legislature:

1965 Description:

From Orem on Route 8 easterly to Edgemont on Route 7.

Approved by 1965 Legislature:

1967 Legislature:

From Orem on Route 8 easterly to Route 7.

1969 Legislature:

Withdrawn as a State Route by the **1969 Legislature.**

*(A) 1977 Commission Action (May 20, 1977)

Approved as a State Route.

1977 Description:

From State Route 15 (I-15) west of Levan east to State Route 28 in Levan.

1983 Legislature: Description remains the same.

1985 Legislature: Description remains the same.

1986 Legislature: Description remains the same.

*(B) 1987 Commission Action May 8, 1987:

Revised Route 78 to read as follows (From Route 15 at Mills Junction Interchange northerly to Jct. with Route 28 in Levan).

Approved by the 1988 Legislature:

1990 Legislature: Description remains the same.

1992 Legislature: Description remains the same.

Route 78 Cont.

1993 Legislature: Description remains the same.

1994 Legislative Description:

From Route 15 at the Mills Junction Interchange northerly to west of Levan; thence east to Route 28 in Levan.

1995 Legislature: Description remains the same.

1996 Legislature: Description remains the same.

1997 Legislature: Description remains the same.

1998 Legislative Description:

From Route 15 at the Mills Junction Interchange northerly to west of Levan; then east to Route 28 in Levan.

1999 Legislature: Description remains the same.

2000 Legislature: Description remains the same.

2001 Legislature: Description remains the same.

2002 Legislature: Description remains the same.

2003 Legislature: Description remains the same.

2004 Legislature: Description remains the same.

2005 Legislature: Description remains the same.

2006 Legislature: Description remains the same.

2007 Legislature: Description remains the same.

2008 Legislature: Description remains the same.

2011 Legislature: Description remains the same.

* Refers to resolution index page following.

Route78

COUNTY/VOLUME & RESOLUTION NO.

A. Juab Co. 6/2

B. Juab Co. 7/29

DESCRIPTION OF RESOLUTION CHANGE

- (A). Re-designation – From SR-163 to SR-78.
- (B). Extension - From its present terminus southerly coincident with old alignment of U.S.91 to the on and off ramps west side of Mins Jct. Interchange.

RESOLUTION

Redesignation of Various State Routes

WHEREAS, it has been determined that it would be advantageous for record keeping and developing a Highway Reference System that various state routes be redesignated by hierarchy with the route number being synonymous with the US route designation, and

WHEREAS, this proposed revision of State Route Designations is concurred in by all District Directors.

NOW THEREFORE, be it resolved as follows:

That Interstate Route 15 be designated as State Route 15 and by this action delete the designation of State Route 1 and redesignate present State Route 15 as State Route 9,

That Interstate Route 80 be designated as State Route 80 and by this action delete the designation of State Route 2 and redesignate present State Route 80 as State Route 92,

That Interstate Route 80N be designated as State Route ~~82~~⁸⁴ and by this action delete the designation of State Route 3 and redesignate present State Route ~~82~~⁸⁴ as State Route ~~126~~⁸²,

That Interstate Route 70 be designated as State Route 70 and by this action delete the designation of State Route 4 and redesignate present State Route 70, part of State Route 102, part of State Route 69, part of State Route 16 and State Route 51 as State Route 30 and by this action delete the designation of State Route 51,

That Interstate Route 215 be designated as State Route 215 and by this action delete the designation of State Route 5,

That US-6 and 50 from the Utah-Nevada State line to Delta be designated as State Route 6 and that US-6 from Delta to the junction with I-70 west of

RESOLUTION

Redesignation of Various State Routes

Page 2

Green River also be designated as State Route 6 and by this action delete the designation of State Route 27,

That US-40 be designated as State Route 40 and by this action delete the designation of State Route 6 and redesignate present State Route 40 as State Route 134,

That US-50 from Delta to Salina be designated as State Route 50 with the exception of that section coincident with Interstate Route 15 and by this action delete the designation of State Route 26 and redesignate a part of present State Route 50 as State Route 26,

That US-89 be designated as State Route 89 with the exception of those sections coincident with Interstate Route 70, US-6, I-15 and US-91 and by this action delete the designation of State Route 259, part of State Route 11, part of State Route 28, State Route 32, State Route 8, State Route 271, part of State Route 106, State Route 169, State Route 49, part of State Route 50, part of State Route 84, State Route 13 and the remaining part of State Route 16, redesignate present State Route 89 as State Route 169 and redesignate that portion of State Route 84 from Brigham northerly to State Route 30 as State Route 13,

That US-91 be redesignated as State Route 91 and by this action delete the designation of State Route 85,

That US-189 be designated as State Route 189 with the exception of those sections coincident with US-40 and Interstate Route 80 and by this action delete the designation of State Route 7, 151 and part of State Route 35,

That US-163 be designated as State Route 163 and by this action delete the designation of State Route 47, part of State Route 9 and redesignate present State Route 163 as State Route 78,

That US-666 be designated as State Route 666 and by this action delete

RESOLUTION

Redesignation of Various State Routes

Page 3

the remaining portion of State Route 9,

That as a result of the aforementioned revisions the State Routes involved will be described as follows:

Route 6 From the Utah-Nevada State line easterly via Delta and Tintic Junction, thence easterly via Santaquin, Payson and Spanish Fork to Moark Junction, thence easterly via Spanish Fork Canyon and Price to Route 70 (Interstate Route 70) west of Green River.

Route 9 From Harrisburg Junction on Route 15 (Interstate Route 15) easterly to Zion National Park south boundary, thence from Zion National Park east boundary to Mt. Carmel Junction on Route 89.

Route 11 From the Utah-Arizona State line north to a junction with Route 89 in Kanab.

Route 13 From a junction with Route 91 in Brigham City northerly via Bear River and Haws Corner to a point south of Riverside, thence east to Route 30 north of Collinston.

Route 15 From the Utah-Arizona State line near St. George to the Utah-Idaho State line south of Malad, Idaho, (traversing the alignment of Interstate Route 15). Segments of present State Routes used as Interstate Traveled-way will remain State responsibility until these segments are replaced by completed Interstate Projects.

Route 16 From the Utah-Wyoming State line northerly to Route 30 at Sage Creek Junction.

Route 26 From Route 84 in Roy easterly to Route 89 in Ogden (Former SR-50 Part).

Route 28 From a junction with Route 89 in Gunnison northerly via Levan to a junction with Route 15 (Interstate Route 15) north of Levan.

Route 30 From the Utah-Nevada State line northeasterly via Curlew Junction to Route ~~82~~⁸⁴ (Interstate Route 80N) west of Snowville. Then commencing

RESOLUTION
Redesignation of Various State Routes
Page 4

again at a junction with Route ~~82~~⁸⁴ (Interstate Route 80N) west of Tremonton easterly via Tremonton, Haws Corner and Collinston to Route 91 in Logan. Then commencing again at a junction with Route 89 in Garden City southeasterly via Sage Creek Junction to the Utah-Wyoming State line.

✓ Route 35 From Route 189 at Francis southeasterly via Tabiona to Route 87 north of Duchesne.

✓ Route 40 From Silver Creek Junction on Route 80 (Interstate Route 80) easterly via Heber City, Duchesne and Vernal to the Utah-Colorado State line.

✓ Route 50 From Route 6 in Delta southeasterly to Holden, thence northerly to Route 15 (Interstate Route 15) and commencing again on Route 15 (Interstate Route 15) near Scipio southeasterly via Scipio to a junction with Route 89 in Salina.

✓ Route 69 From Brigham on Route 13 northerly via Honeyville to Route 30 at Deweyville.

✓ Route 70 From Route 15 (Interstate Route 15) near Cove Fort to the Utah-Colorado State line west of Grand Junction, Colorado, (traversing the alignment of Interstate Route 70). Segments of present State Routes used as Interstate Traveled-way will remain State responsibility until these segments are replaced by completed Interstate Projects.

✓ Route 78 From Route 15 (Interstate Route 15) west of Levan east to Route 28 in Levan.

✓ Route 80 From the Utah-Nevada State line near Wendover to the Utah-Wyoming State line west of Evanston, Wyoming, (traversing the alignment of Interstate Route 80). Segments of present State Routes used as Interstate Traveled-way will remain State responsibility until these segments are replaced by completed Interstate Projects.

RESOLUTION
Redesignation of Various State Routes
Page 5

✓ ⁸⁴
Route ~~82~~ From the Utah-Idaho State line near Snowville to a point on Route 15 (Interstate Route 15) near Tremonton, thence from another point on Route 15 (Interstate Route 15) near Roy to Route 80 (Interstate Route 80) near Echo, (traversing the alignment of Interstate Route ⁸⁴~~80A~~). Segments of present State Routes used as Interstate Traveled-way will remain State responsibility until these segments are replaced by completed Interstate Projects.

✓ ¹²⁶
Route ~~84~~ From Route 15 (Interstate Route 15) south of Layton northerly to Route 89 at Hot Springs Junction.

✓ Route 89 From the Utah-Arizona State line northwest of Page, Arizona, westerly to Kanab, thence northerly to a junction with Route 70 (Interstate Route 70) at Sevier Junction. Then commencing again at the junction with Route 70 (Interstate Route 70) south of Salina northerly via Salina, Gunnison and Mt. Pleasant to a junction with Route 6 at Thistle Junction. Then commencing again at a junction with Route 6 at Moark Junction northerly via Springville, Provo, Orem and American Fork to Route 15 (Interstate Route 15) north of Lehi. Then commencing again at a junction with Route 15 (Interstate Route 15) near Draper Crossroads northerly via Murray and Salt Lake City to a junction with Route 15 (Interstate Route 15) at Becks Interchange. Then commencing again at a junction with Route 15 (Interstate Route 15) near Orchard Drive northerly via Bountiful to a junction with Route 15 (Interstate Route 15) at North Bountiful Interchange. Then commencing again at a junction with Route 15 (Interstate Route 15) at Lagoon Junction northerly via Uintah Junction and Ogden to Route 91 near south city limits of Brigham City. Then commencing again at a junction with Route 91 in Logan northeasterly to Garden City, thence north to the Utah-Idaho State line.

○ Route 91 From Route 15 (Interstate Route 15) south of Brigham, thence

RESOLUTION

Redesignation of Various State Routes

Page 6

easterly via Brigham Canyon and Logan to the Utah-Idaho State line near Franklin, Idaho.

✓ Route 92 From Route 15 (Interstate Route 15) near Point of the Mountain east via American Fork Canyon to Route 189 in Provo Canyon.

✓ Route 102 From Route 83 east of Lampo Junction northeasterly via Penrose and Thatcher to Route ~~82~~⁸⁴ (Interstate Route ~~80N~~⁸⁴) west of Tramonton.

✓ Route 106 From Route 89 northerly via Second West and Fourth North in Bountiful, thence northerly to Sheppard Lane in Farmington, thence east to Route 89.

✓ Route ~~126~~⁸² From Route 30 in Tremonton north via 300 East to Garland, thence east approximately 0.8 mile, thence north to Route 13.

✓ Route 134 From Kanesville on Route 37 northerly to Plain City, thence easterly to Pleasant View on Route 89.

✓ Route 163 From the Utah-Arizona State line southwest of Mexican Hat northerly via Blanding, Monticello and Moab to Route 70 (Interstate Route 70) at Crescent Junction.

✓ Route 169 From Route 162 east to Eden on Route 166.

✓ Route 189 From Route 15 (Interstate Route 15) south of Provo northerly via University Avenue and Provo Canyon to Route 40 south of Heber. Then commencing again from Route 40 at Hailstone Junction easterly to Francis, thence northerly via Kamas to Route 80 (Interstate Route 80) south of Wanship.

✓ Route 215 From a junction with Route 80 (Interstate Route 80) near the mouth of Parleys Canyon southeast of Salt Lake City, southwesterly near the south city limits of Murray, junctioning with Route 15 (Interstate Route 15), thence northwesterly, northerly and easterly to a junction with Route 15 (Interstate Route 15) north of Salt Lake City, (traversing the alignment of Interstate Route 215).

Route 666 From Route 163 at Monticello east to the Utah-Colorado State line.

State
Charters

RESOLUTION
Redesignation of Various State Routes
Page 7

The maps presented relating the action taken herewith are hereby a part of this resolution and will be stored at the office of the Planning Statistics Section of the Transportation Planning Division.

Dated this 20th day of May, 1977.

UTAH TRANSPORTATION COMMISSION

B. L. L. L.

Chairman

W. L. L.

Vice-Chairman

C. E. L.

Commissioner

G. A. L.

Commissioner

S. L. L.

Commissioner

ATTEST:

D. A. L.
Secretary

STATE ROUTES REQUIRING CHANGES IN ROUTE DESIGNATION SIGNING

<u>Existing Designation</u>	<u>New Designation</u>	<u>District</u>	<u>Miles</u>
SR-15	SR-9	5	32.6
SR-15	SR-9	3	12.3
SR-80	SR-92	6	26.8
SR-82	SR-126	1	3.1
SR-40	SR-134	1	12.4
SR-50 Part	SR-26	1	3.8
SR-89	SR-169	1	0.6
SR-84	SR-13	1	<u>27.8</u>
		Total	119.4

SR-70, SR-102, SR-69, SR-16 and SR-51 in District 1, remove rectangular route signs from sign posts.

US-89 signs thru Sevier Valley will be replaced with "Temporary I-70" signs with rectangular signs under the Temporary I-70 sign indicating the State Route designation until completion of I-70 thru this area. Upon completion of I-70 between Sevier Junction and Salina all State Routes will be resigned by their designated State Route, District 3

Present State Routes 15 and 80 will be dual route signed for a period of approximately two years as a guide to Tourists, Districts 5, 3 and 6

All directional signing (junction signs, etc.) affected by these revisions will also require changing.

Memorandum

UTAH STATE DEPARTMENT OF HIGHWAYS

DATE: June 2, 1977

TO : District Directors

FROM : L. R. Jester, P.E. *L.R.J.*
Engineer for Transportation Planning

SUBJECT: Redesignations of State Routes

On May 20, 1977, the Utah Transportation Commission approved the redesignations of various State Routes as described in the attached resolution. Please review the changes that have been approved in your District and notify all interested agencies within your area.

Attachment

Note: All Districts refer to last page of resolution for necessary signing changes.

UTAH STATE DEPARTMENT OF HIGHWAYS

June 2, 1977

C
Mr. Norman V. Hancock, Chief
Game Management Section
Utah State Division of Wildlife Resources
1596 West North Temple
Salt Lake City, Utah 84104

O
Subject: Redesignation of State Routes

Dear Mr. Hancock:

P
On May 20, 1977, the Utah Transportation Commission approved the redesignations of the various State Routes as described in the enclosed Resolution.

Yours very truly,

L. R. Jester, P.E.
Engineer for Transportation Planning

Y
LRJ/BDB/WDM/BDent/cs
Enclosure

cc: H.B. Leatham

Memo sent to all District Engineers & interested state personnel.

Also sent to: Mr. Marvin E. Blase, U.S. Dept. of Soil Conservation
Mr. Ralph Hodges, Utah Fording & Bridge Company

State
Changyos
2

1/13/80

AMERICAN ASSOCIATION OF STATE HIGHWAY AND TRANSPORTATION OFFICIALS

ROBERT N. HUNTER, President
Chief Engineer
Missouri State Highway Department



HENRY E. STAMMILL, Executive Director
444 N. Capitol Street, N.W., Suite 225
Washington, D. C. 20001
Telephone (202) 624-5800

July 12, 1977

- Mr. Blaine J. Kay, Director
Utah Department of Transportation
- Mr. Darrell V. Manning, Director
Idaho Transportation Department
- Mr. Robert A. Burco, Director
Oregon Department of Transportation

[Handwritten signature and stamp]
NO. 100-1-100
U.S. DEPARTMENT OF TRANSPORTATION

Gentlemen:

The Route Numbering Committee reviewed the application coming from the Idaho Department of Transportation, and concurred in by the Utah Department of Transportation, for the redesignation of I-80N.

After reviewing the application, together with objections raised by States of Washington and Oregon, the Committee voted to redesignate I-80N as I-84, subject to concurrence by the Federal Highway Administrator, and with the State of Oregon in consultation with the States of Utah and Idaho to make the determination when the sign change would take place; but no later than July 1st, 1980.

This action was reviewed by the Executive Committee at its meeting on July 7th, 1977, and concurred therein.

Sincerely,

[Handwritten signature]
H. J. Rhodes
Deputy Director

HJR:pw

cc: Mr. William Cox
Federal Highway Administrator
Federal Highway Administration

RECEIVED
7-14-77

COPY OF LETTER RETAINED IN CENTRAL FILES RETURN THIS TO CENTRAL FILES AFTER ACTION HAS BEEN COMPLETED

SEARCHED INDEXED SERIALIZED FILED
KAY



U.S. Department
of Transportation

**Federal Highway
Administration**

gmg
8/6/87

Memorandum

Utah Division

Subject: Functional Classification Action No. 3
FAS System Action No. 3

Date July 31, 1987

From: Division Administrator
Salt Lake City, Utah 84147

Reply to
Attn of HPP-UT

To: Mr. E. H. Findlay, CPA
Director of Transportation (07-SP)
Salt Lake City, Utah

Reference is made to your July 17, 1987, request for functional classification changes and Federal-aid system changes in Juab County.

With regard to functional classification and Federal-aid system changes on the Interstate system, no actions are required. Both the functional classification and the Federal-aid system approvals have already been made. The only action required by you is to make the appropriate changes in your HPMS records as segments of the Interstate are open to traffic.

With regard to the major collector functional classification change and extension of FAS 276, both changes are approved as described in your request. A copy of the approved description sheet is attached.

J. F. Riddiough
Daniel Dake, P.E.
jd

Attachment

CC:
UDOT 01-AD

Mr. Findlay
RECEIVED
1987 JUL 31 10 40 AM
UTAH STATE
DEPT. OF TRANSPORTATION
CENTRAL FILE

* APPROVED DATE 7/31/87

FHWA-UTAH DIVISION

BY J. F. Bidderick

FOR DIVISION ADMINISTRATOR

UTAH DEPARTMENT OF TRANSPORTATION
Federal-aid Secondary System

SHEET 9 OF 22

Route Number	Route Description and Termini	County	Mileage		
			Local	State	
* 276	From FAP-1 (I-15) at Mills Junction Interchange North to FAP-22 (SR-28) in Levan. Revised July 17, 1987	Juab		9.2	9.2
277	From FAP-22, 2 miles south of Nephi, west and north, thence east to FAS-278.	Juab	8.9		8.9
278	From FAP-1 (I-15) South Nephi Interchange north to FAP-1 (I-15) North Nephi Interchange.	Juab		4.8	4.8
279	From FAP-40 at Pigeon Hollow Junction north to FAP-55 in Moroni.	Sanpete		7.3	7.3
282	From FAP-40 in Fairview easterly and southeasterly to FAP-24 near Huntington.	Sanpete Emery		18.6 29.1	47.7
283	From FAP-40 southwest of Mt. Pleasant southerly via Spring City then westerly and northerly to FAP-55 in Fountain Green.	Sanpete	9.6	12.3	21.9
286	From FAS-287 in Mayfield to FAP-40 southwest of Sterling.	Sanpete		3.7	3.7
287	FAP-22 in Gunnison easterly to the forest boundary east of Mayfield.	Sanpete	3.5	7.6	11.1
290	From Consumers southeast to FAP-28 near Spring Glen.	Carbon	12.6		12.6
291	From Mutual to FAP-28 at Helper.	Carbon	8.0		8.0
292	From FAP-28 south of Helper northeasterly to Kenilworth.	Carbon		5.3	5.3

R E S O L U T I O N

State Route 78

Federal-aid Primary Route 1

Federal-aid Secondary Route 276

Relinquishment of State Constructed Frontage and Access Roads

WHEREAS, the completion of projects I-15-5(16)207, I-15-5(15)220 and IG-15-5(22)207 has resulted in the construction on new alignment of a section of Interstate Route 15 from a point near the Mills Jct. Interchange to south Nephi in Juab County, and

WHEREAS, the completion of these projects has resulted in the construction of frontage and access roads within this area and obliteration of old U.S. 91 to Engineer's Station 1686 ± (Original Survey Line), and

WHEREAS, it has been recommended by the District 6 Director and concurred in by the Juab County Commission that the maintenance responsibilities for the access and frontage roads be relinquished to Juab County, and

WHEREAS, the remaining portion of old U.S. 91 within this area between milepoints 206.84 ± and 212.78 ± will no longer be used as Traveled Way for Interstate Route 15, but will continue to serve as a public road on the State Highway System, and

WHEREAS, the aforementioned U.S. 91 was extended on new alignment from Engineer Stations 46+00± (Line 3) to 68+74± (Line 3) to provide a connection to Interstate Route 15 at the Mills Jct. Interchange, and

WHEREAS, the Planning Staff has reviewed the functional classification of old U.S. 91 from Engineer's Station 1686 ± (Original Survey Line) to the westerly end of Federal-aid Secondary Route 276 and has determined that it be functionally reclassified from Local to Major collector, and that the extension from Engineer Stations 46+00 ± to 68+74± (Line 3) also be functionally classified as Major Collector, and

NOW THEREFORE, pursuant to the authority of Sections 27-12-27 and 27-12-29, UCA, 1953, as amended, be it resolved as follows:

a. That the Transportation Commission relinquishes the maintenance responsibility for the following frontage and access roads to Juab County:

<u>Road Designation</u>	<u>Engineer Station or Location</u>	<u>Length</u>
"K" Line Frontage Road	3+84.54 to 68+30.0	1.20
"K" Line Connection	14+00 to 15+40.52	0.40
"Line 3" Crossroad	25+15.57 to 46+00	0.29
Sage Valley Road	5+00 to 20+06.96	0.21
Sage Valley Access Road	113+00 to 127+00	0.19
Lampson Canyon Road	6+00 to 17+00	0.82
Wide Canyon Frontage Road	76+88 to 120+00	0.03
"J" Line Frontage Road	21+97 to 68+97.17	0.89
"P" Line Access Road	7+44.82 to 21+00	0.26
"M" Line	8+00 to 18+00	0.27

b. That the obliterated portion of U.S. 91 between Engineer Stations 1591+ and 1686+ be deleted from the State Highway System,

c. That the extension of existing U.S. 91 from Engineer Stations 46+00+ (Line 3) to 68+74+ (Line 3) be added to the State Highway System,

d. That application be made to the FHWA to extend Federal-aid Secondary Route 276 from its present westerly terminus near Levan, southerly, coincident with old U.S. 91 and its extension to the on and off ramps on the west side of the Mills Jct. Interchange,

e. That the State Route 78 designation be extended from its present westerly terminus, near Levan, to be coincident with the proposed extension of Federal-aid Secondary Route 276 as next above,

f. That by this action Federal-aid Primary System mileage will increase 18.58+ miles, and the Federal-aid Secondary mileage will increase 6.44 + miles,

g. That by this action State Highway System mileage will increase 18.69+ miles and Juab County "B" System mileage will be adjusted accordingly,

n. That the letters from the District Director and Juab County be hereby incorporated as a part of this Resolution,

i. That the maps illustrating the action taken herewith be hereby incorporated as a part of this Resolution.

Dated this 8th day of May, 1987.

UTAH TRANSPORTATION COMMISSION

Samuel D. King
Chairman

Wayne S. Anderson
Vice-Chairman

John W. Lester
Commissioner

B. Lynn Cox
Commissioner

Attest:

Robert A. Mallecker
Secretary

James H. Larkin
Commissioner



TRANSPORTATION COMMISSION

SAMUEL J. TAYLOR
Chairman
WAYNE S. WINTERS
Vice Chairman
CLEM H. CHURCH
R. LAVALIN COX
TODD G. WESTON

ELVA H. ANDERSON
Secretary

UTAH DEPARTMENT OF TRANSPORTATION

825 North 9th West
Orem, Utah 84057

November 20, 1986

WILLIAM D. HURLEY, P.E.
Director

GENE STURZENEGGER, P.E.
Assistant Director
Dan F. Nelson, P.E.
TOM ANDERSON, P.E.
District Director

Commissioner Tom Fowkes
Juab County Commission
Nephi, Utah 84053

Dear Commissioner Fowkes:

We are presently trying to finalize the operational details relative to the changes in the transportation system created by the recent completion of I-15 through Juab County. While most everyone agrees that it is a relief to a major safety concern that existed for a long time on the old highway, the new section adds maintenance responsibility for Utah Department of Transportation in the Juab County area. We think the results have been very positive relative to the improvement.

Included in the interstate project were several modifications to the local road system. Now that we have completed construction, it is necessary to turn over maintenance responsibility to the County on all crossroads and frontage roads that would normally fall under County jurisdiction.

We are enclosing a list of the roads involved. We request that you respond in writing, indicating your willingness to accept the above-mentioned maintenance responsibilities.

Sincerely,

DAN F. NELSON, P. E.
District Director

Enclosure
DFN/JSH:ch

*Copy with enclosure
given to [unclear] filing*

JUAB COUNTY

THE KEY COUNTY OF
CENTRAL UTAH

NEPHI, UTAH 84648

April 22, 1987

Utah Department of Transportation
4501 South 2700 West
Salt Lake City, Utah 84119

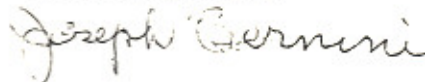
Attn: Gus N. Jackson, P.E. - Planning Statistics Engineer

Re: Utah Transportation Commission Resolution Pertaining
to State Route 78 and Federal-aid Secondary Route 276.

Dear Mr. Jackson:

Please be advised that Juab County has reviewed the attached resolution encompassing State Route 78, Federal-aid Primary Route 1, Federal-aid Secondary Route 276 and Relinquishment of State Constructed Frontage and Access Roads as submitted by your office and with recommendation of our county engineer we do concur in this action.

Respectfully,

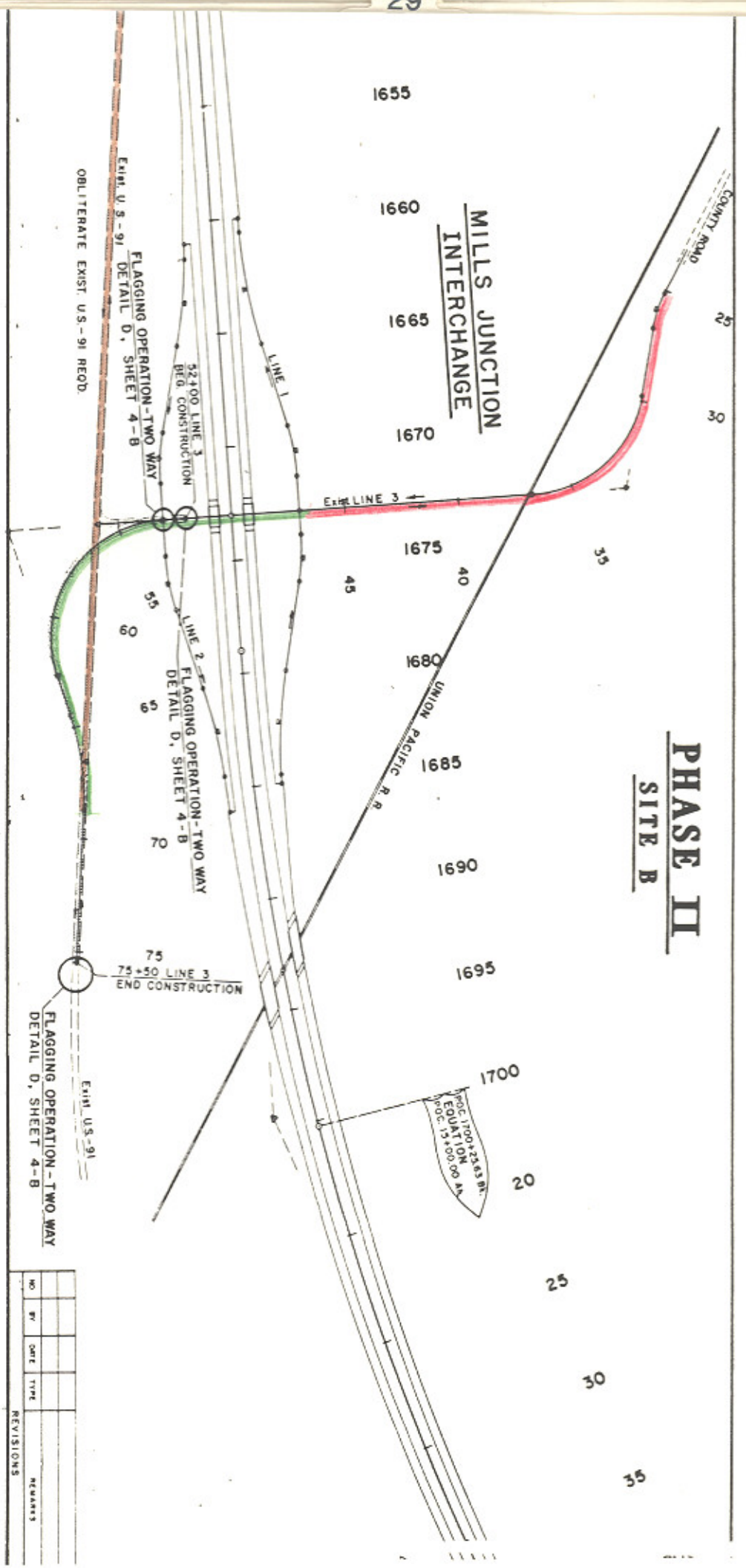


Joseph Bernini, Chairman
Juab County Commission

Enclosure

cc: Uintah Engineering, Inc.
Juab County Commission file

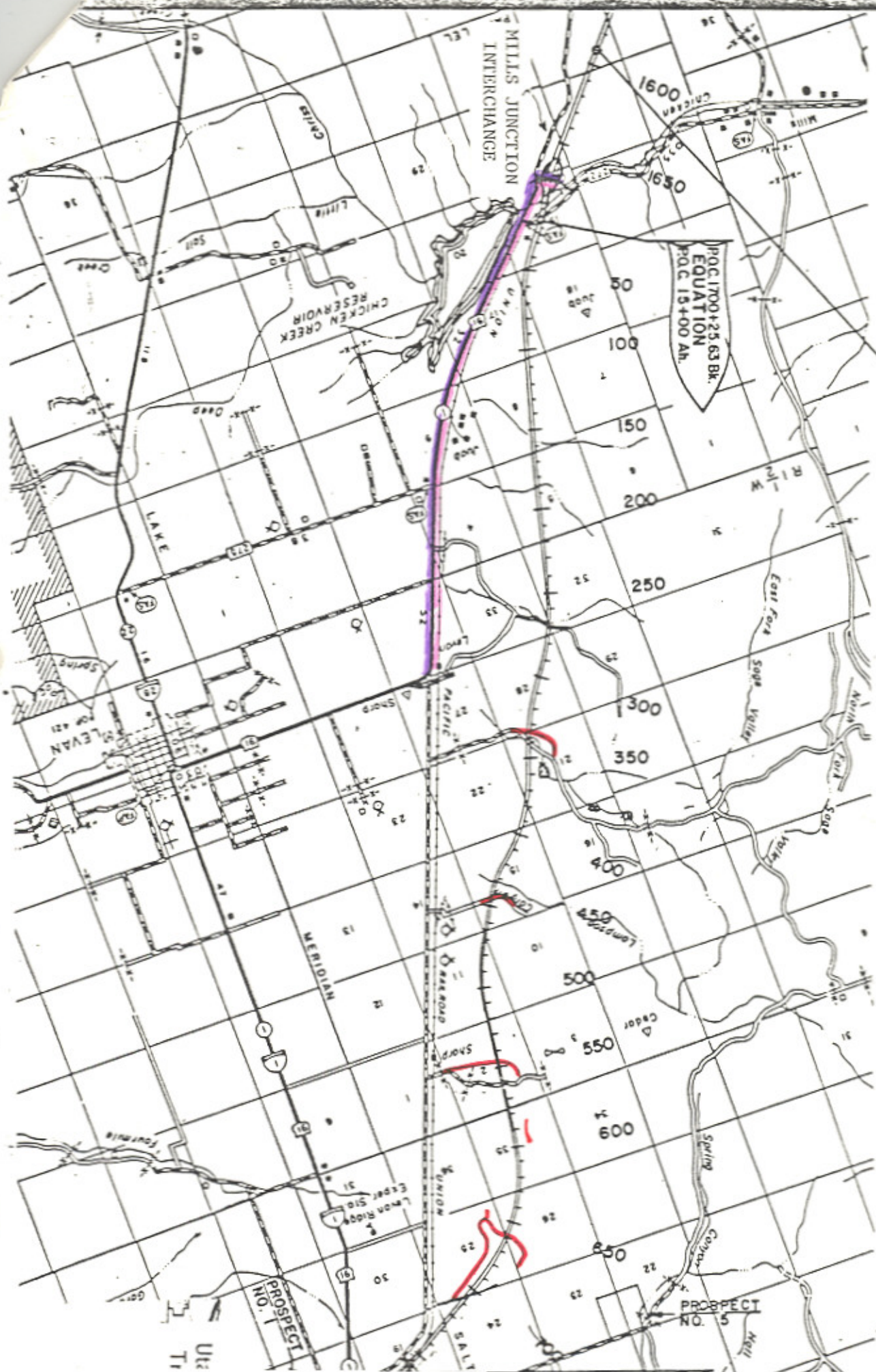
PHASE II SITE B



- Deletion from State System
- Addition to State System
- Transferred to Juab County

Utah Department of Transportation
Transportation Planning Division

NO.	BY	DATE	TYPE	REMARKS
REVISIONS				



P.O.C. 1700+25.63 BK.
EQUATION
P.O.C. 15+00 A.H.

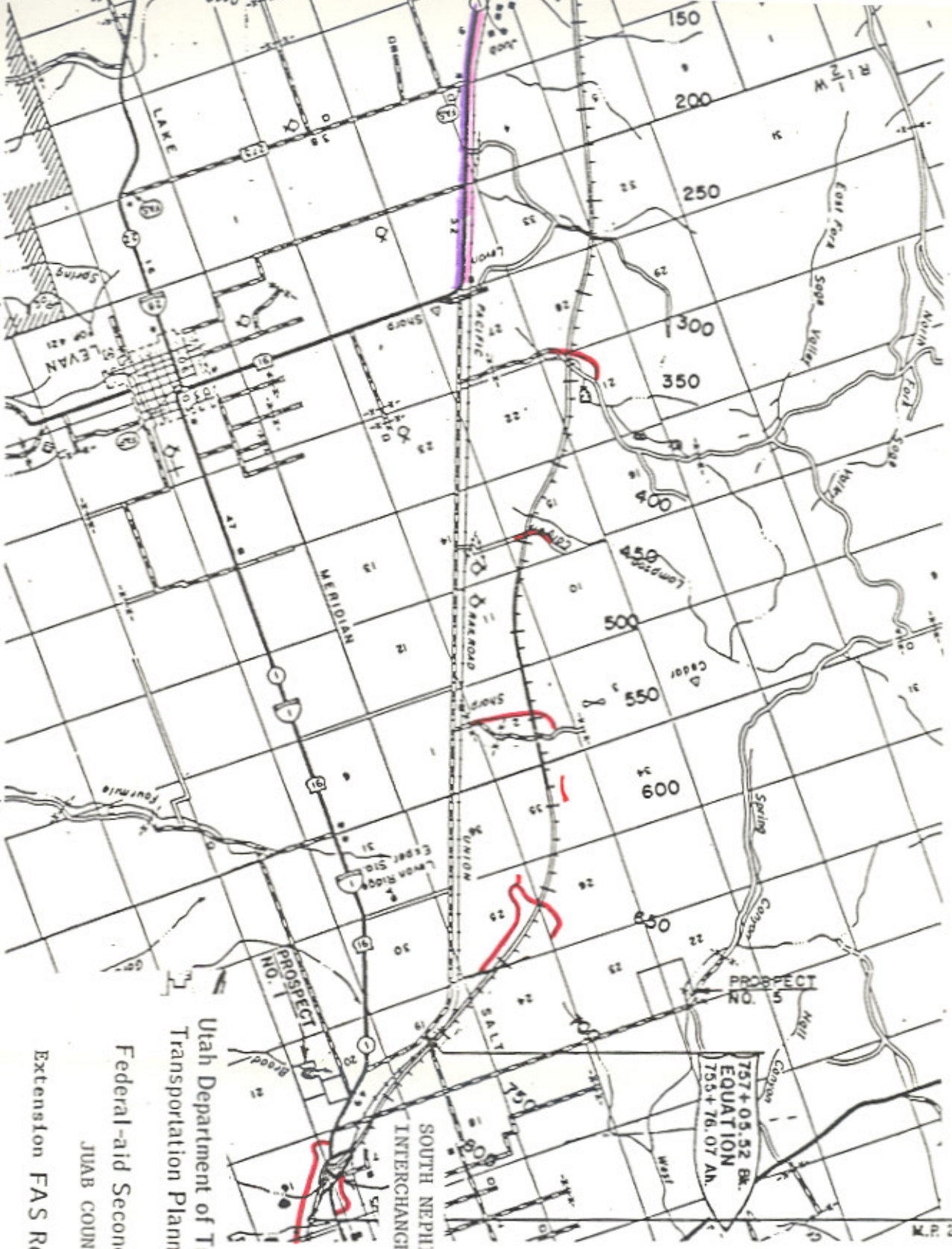
M.P. 204.99

1591+00.00
BEG. PROJECT
ID-15-5 (22) 207

MILLS JUNCTION TO SOUTH NEPHI



MILLS JUNCTION TO SOUTH NEPHI



- Transferred to Juab County
- Extension of FAS-276
- Extension of State Route 78

Utah Department of Transportation
Transportation Planning Division
Federal-aid Secondary System
JUAB COUNTY
Extension FAS Route 78

UTAH STATE DEPARTMENT OF HIGHWAYS

June 2, 1977

C
Mr. Norman V. Hancock, Chief
Game Management Section
Utah State Division of Wildlife Resources
1596 West North Temple
Salt Lake City, Utah 84104

O
Subject: Redesignation of State Routes

Dear Mr. Hancock:

P
On May 20, 1977, the Utah Transportation Commission approved the redesignations of the various State Routes as described in the enclosed Resolution.

Y
Yours very truly,

L. R. Jester, P.E.
Engineer for Transportation Planning

LRJ/BDB/WDM/BDent/cs
Enclosure

cc: H.B. Leatham

Memo sent to all District Engineers & interested state personnel.

Also sent to: Mr. Marvin W. Hines, U.S. Dept. of Soil Conservation
Mr. Ralph Hodges, Utah Dept. of Agriculture